



Product Catalogue



Y-KTF
Round Duct Type
In-Line Fan



Technical Specifications

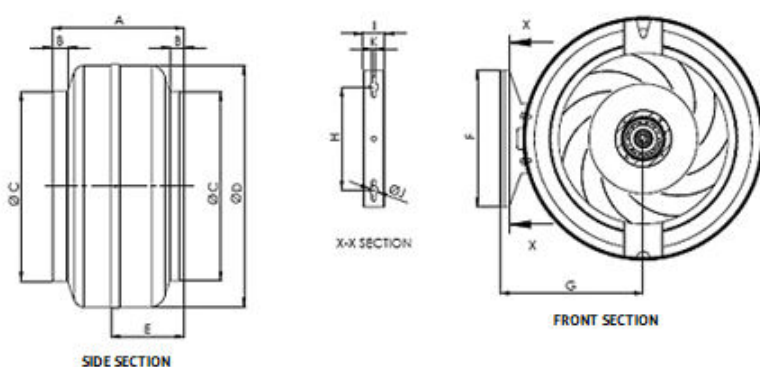
ROUND DUCT TYPE IN-LINE FAN

Y-KTF series round duct type in-line fans are the ideal fans for ducted ventilation systems which requires high flow rate and high pressure loss. Thanks to their compact construction, they can be installed directly in the air ducts without the need for large bends and transducers in any position required. Y-KTF series in-line fans are the ideal choice for high performance and trouble-free operation.

Body is manufacturing from high quality galvanized sheet. Fans are radial fans with backward curved blades. Motors are single phase and has IP55 and Class F insulation. Speed controller is optional for all models.

Usage Areas

Can be used in all kinds of ventilation systems for Industry Buildings, Offices, Residential Buildings, Shopping Malls.

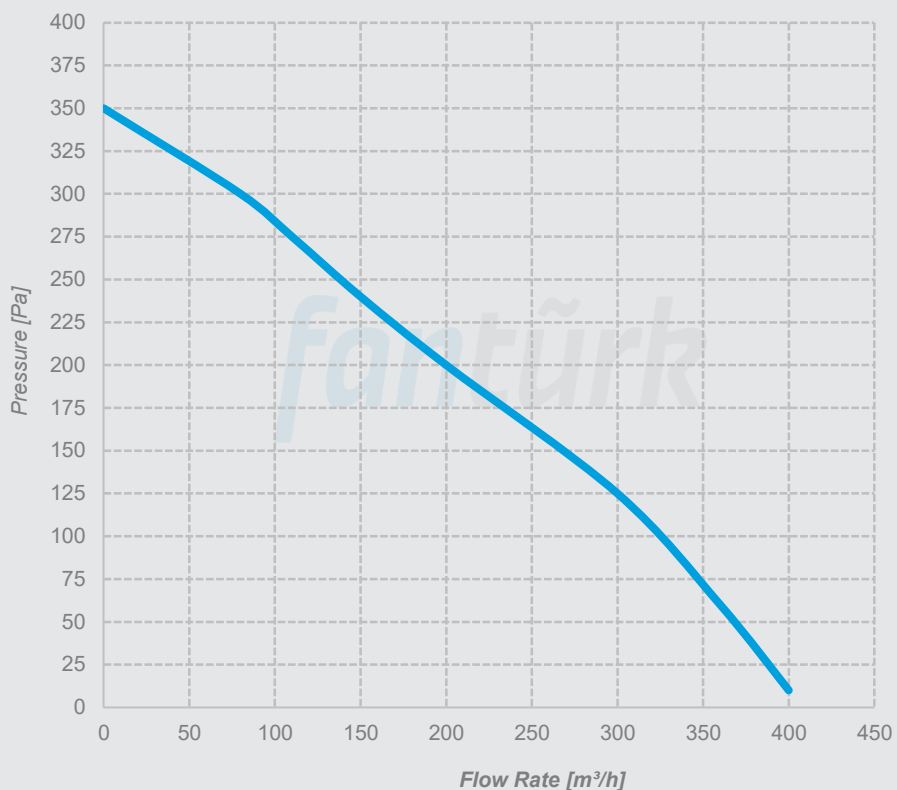


MODEL	A	B	C	D	E	F	G	H	I	J	K	VOLTAGE	FREQUENCY	POWER	CURRENT	CAPACITOR	MOTOR SPEED	AIR FLOW RATE	SOUND LEVEL	WEIGHT
	mm	mm	mm	mm	m m	m m	m m	m m	m m	m m	mm	V	Hz	W	A	µf	rpm	m ³ /h	dB A	kg
Y-KTF 100	210	26	98	233	124	225	157	170	35,5	14	6,5	230	50	68	0,28	2,5	2400	400	42	2,6
Y-KTF 125	203	26	123	233	110	225	157	170	35,5	14	6,5	230	50	76	0,29	2,5	2350	500	43	2,7
Y-KTF 150	230	30	149	322	125	225	200	170	35,5	14	6,5	230	50	110	0,47	3	2200	650	47	3,5
Y-KTF 200	228	30	199	342	130	225	210	170	35,5	14	6,5	230	50	155	0,7	5	2600	1000	52	4,25
Y-KTF 250	227	30	248	342	130	225	210	170	35,5	14	6,5	230	50	150	0,66	5	2600	1200	57	5
Y-KTF 315	220	26	311	397	122	225	238	170	35,5	14	6,5	230	50	187	0,83	6	2500	1900	68	6,1

Performance Curves

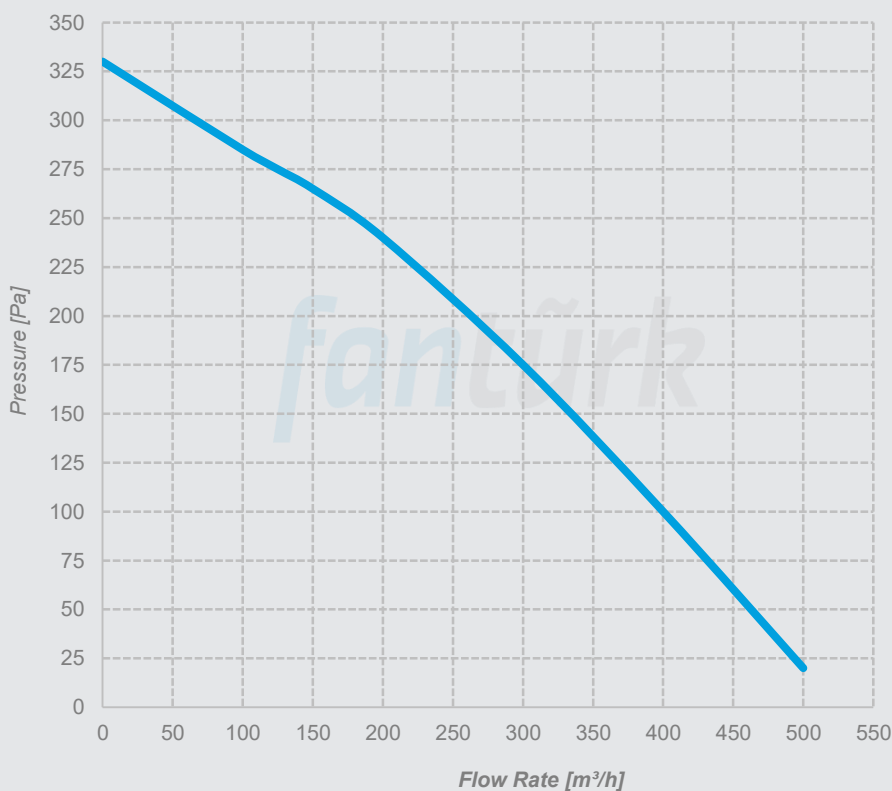
Y-KTF 100

Voltage 230 V
Frequency 50 Hz
Power 68 W
Current 0,28 A
Capaciator 2,5 μ f
Speed 2400 rpm
Air Flow Rate 400 m³/h
Sound Pressure Level 42 dBA
Weight 2,6 kg



Y-KTF 125

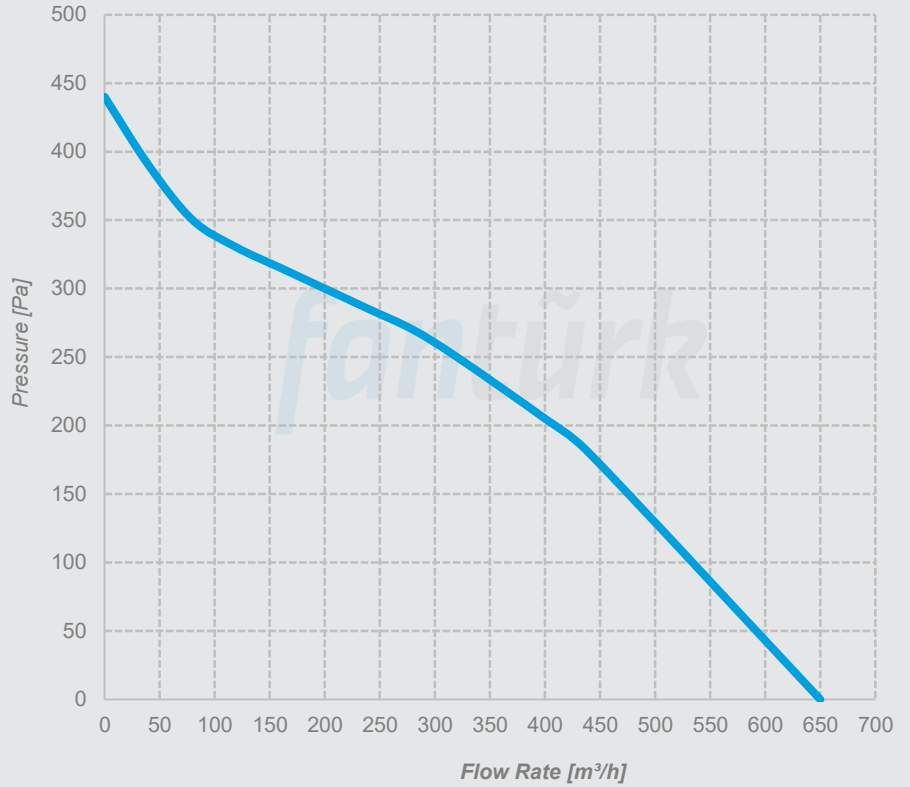
Voltage 230 V
Frequency 50 Hz
Power 76 W
Current 0,29 A
Capaciator 2,5 μ f
Speed 2325 rpm
Air Flow Rate 500 m³/h
Sound Pressure Level 43 dBA
Weight 2,7 kg



Performance Curves

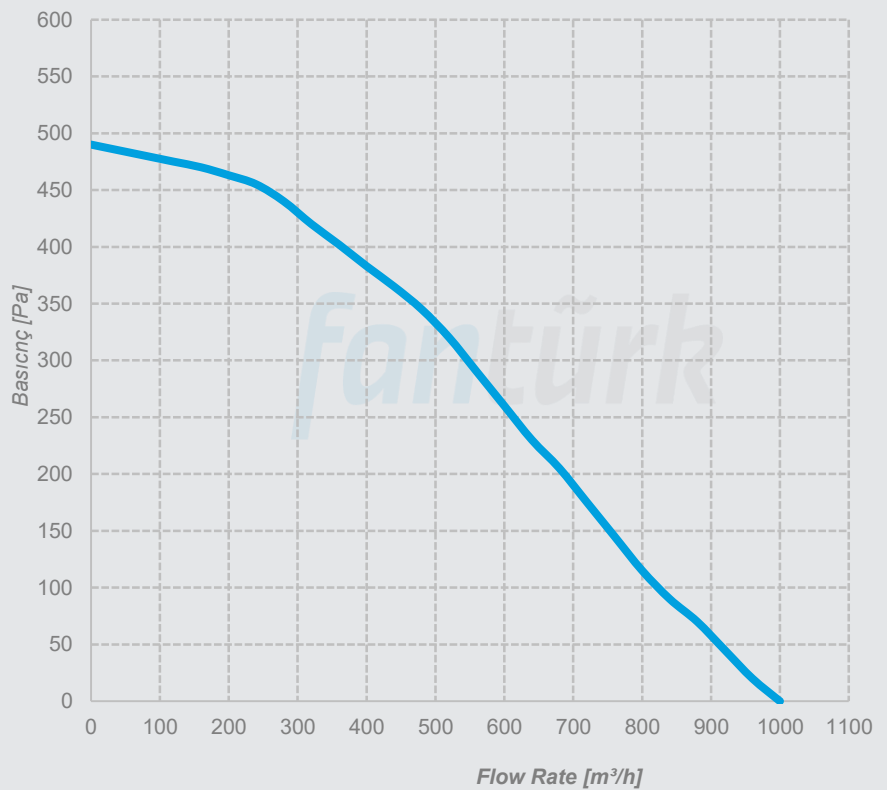
Y-KTF 150

Voltage 230 V
Frequency 50 Hz
Power 110 W
Current 0,47 A
Capaciator 3 μ f
Speed 2200 rpm
Air Flow Rate 650 m³/h
Sound Pressure Level 47 dBA
Weight 3,5 kg



Y-KTF 200

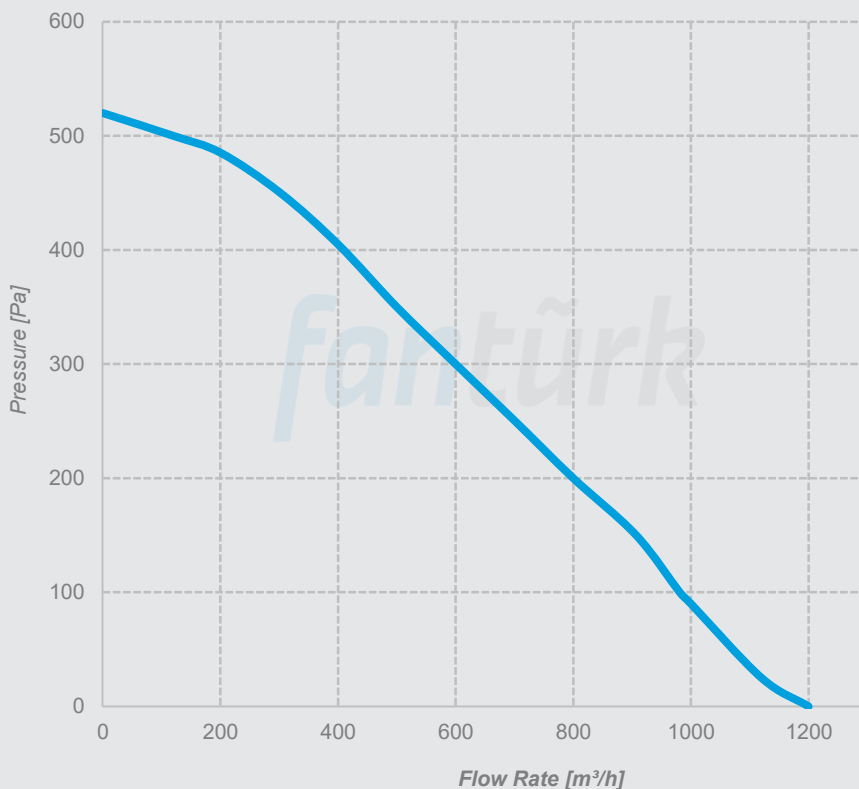
Voltage 230 V
Frequency 50 Hz
Power 155 W
Current 0,7 A
Capaciator 5 μ f
Speed 2600 rpm
Air Flow Rate 1000 m³/h
Sound Pressure Level 52 dBA
Weight 4,25 kg



Performance Curves

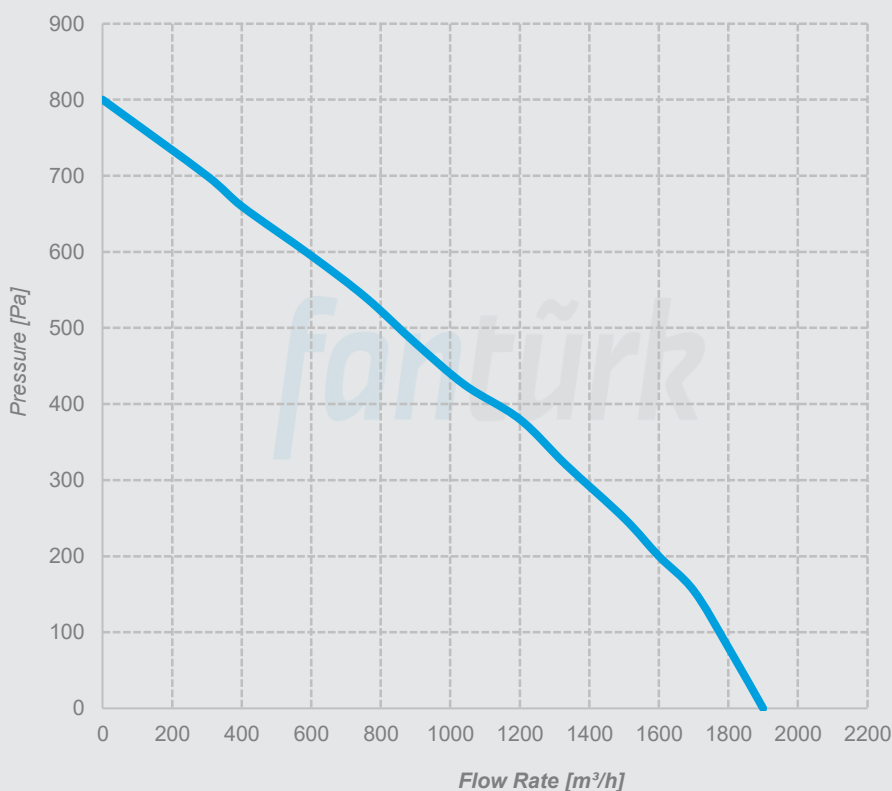
Y-KTF 250

Voltage 230 V
Frequency 50 Hz
Power 150 W
Current 0,66 A
Capaciator 5 μ f
Speed 2600 rpm
Air Flow Rate 1200 m³/h
Sound Pressure Level 57 dBA
Weight 5 kg



Y-KTF 315

Voltage 230 V
Frequency 50 Hz
Power 187 W
Current 0,83 A
Capaciator 6 μ f
Speed 2500 rpm
Air Flow Rate 1900 m³/h
Sound Pressure Level 68 dBA
Weight 6,1 kg



*Minarelicavus OSB District 202. Street No: 19 Nilüfer/Bursa Turkey
T: 90(224)482 50 95 E: info@fanturk.com.tr*

fanturk.com.tr