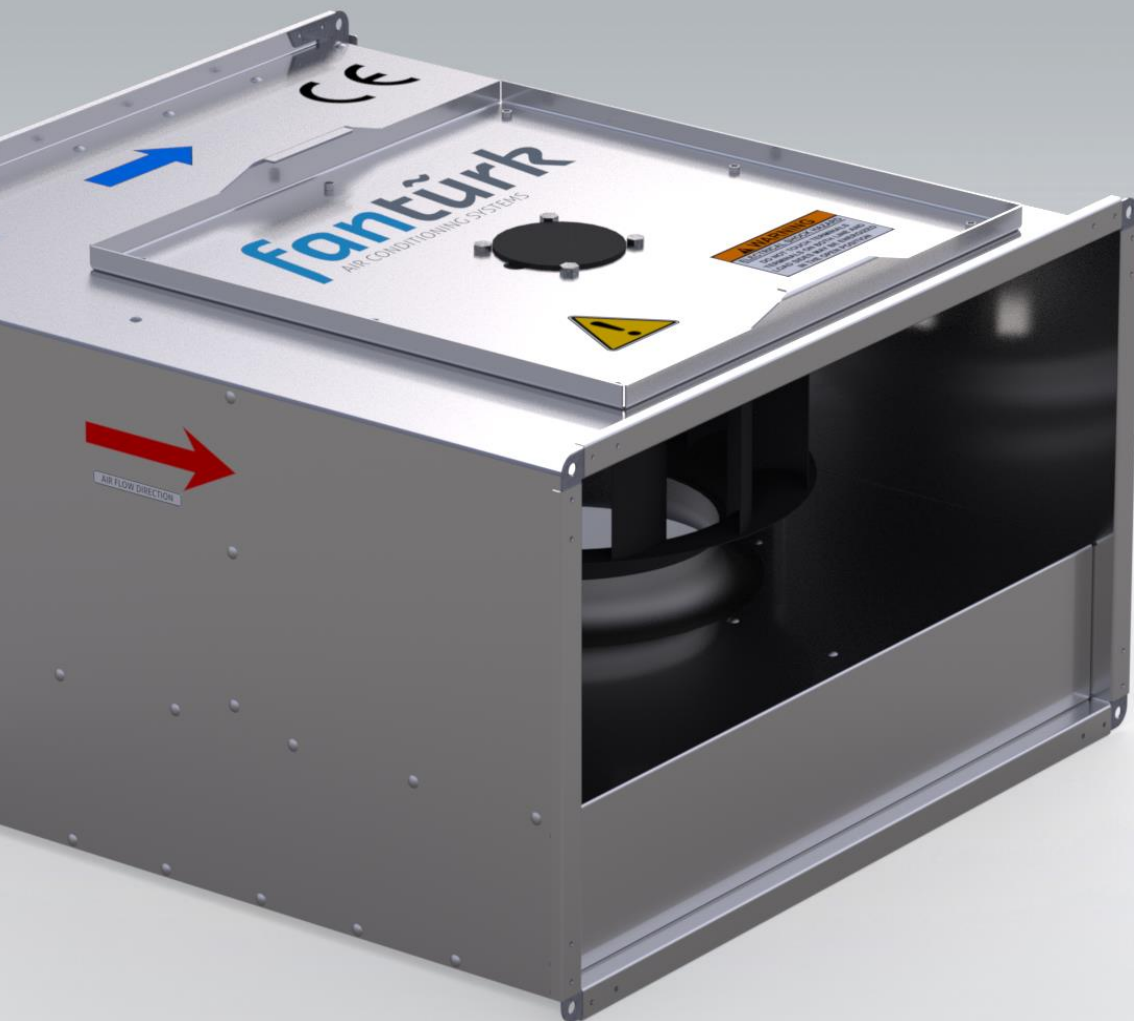




Product Catalogue



D-KTF *Rectangular Duct* *Type In-Line Fan*



Technical Specifications

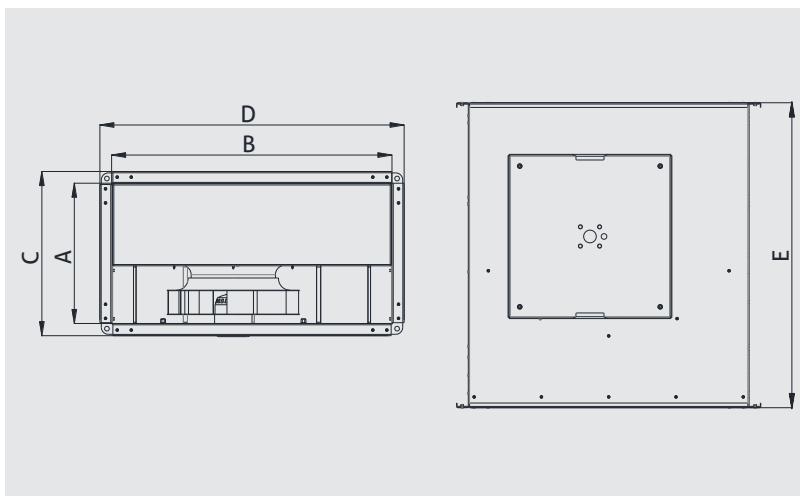
RECTANGULAR DUCT TYPE IN-LINE FAN

D-KTF series rectangular duct type radial fans; They are the ideal fans for ducted ventilation systems where high air flow and high pressure are required. Thanks to their compact construction, they can be installed directly in the air ducts without the need for large bends and transducers in any position required. D-KTF series in-line fans are the ideal choice for high performance and trouble-free operation.

Made of high quality corrosion resistant galvanized steel. Fans are radial fans with backward curved blades. Thanks to the service cover, the fan can carry out maintenance without removing the duct connection. Motors are single phase and has IP55 and Class F insulation. Speed controller is optional for all models.

Usage Areas

Can be used for ventilation systems in industrial buildings, kitchens, toilets, swimming pools, gyms, warehouses, hospitals, offices, laboratories, shopping malls, restaurants, theaters, residential buildings.

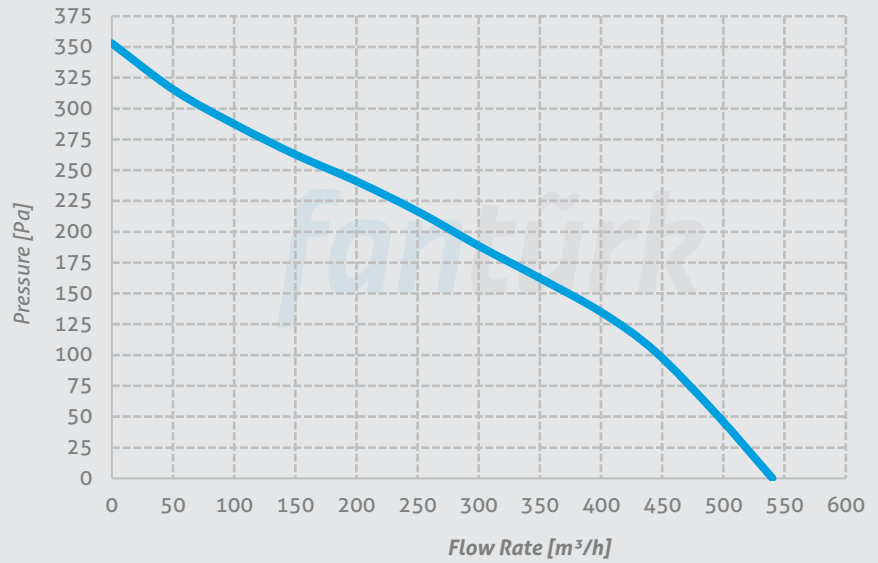


MODEL	A	B	C	D	E	VOLTAGE	FREQUENCY	MOTOR POWER	CURRENT	CAPACITOR	MOTOR SPEED	AIR FLOW RATE	SOUND PRESSURE LEVEL	WEIGHT
	mm	mm	mm	mm	mm	V	Hz	W	A	µF	rpm	m ³ /h	dBA	kg
D-KTF 30 - 15	150	300	200	350	400	230	50	76	0,29	2,5	2350	540	52	7
D-KTF 40 - 20	200	400	250	450	500	230	50	160	0,68	4	2600	1150	63	12
D-KTF 50 - 25	250	500	300	550	550	230	50	180	0,8	4	2700	1520	58	16
D-KTF 60 - 30	300	600	350	650	650	230	50	285	1,5	5	2500	2110	70	20
D-KTF 60 - 35	350	600	400	650	750	230	50	272	1,23	8	1364	3150	66	27
D-KTF 70 - 40	400	700	450	750	800	230	50	500	1,8	12	1380	4400	63	38
D-KTF 80 - 50	500	800	550	850	900	230	50	800	3,7	16	1359	6000	70	61
D-KTF 100 - 50	500	1000	550	1050	1050	230	50	1550	6,8	31	1380	8200	73	86

Performance Curves

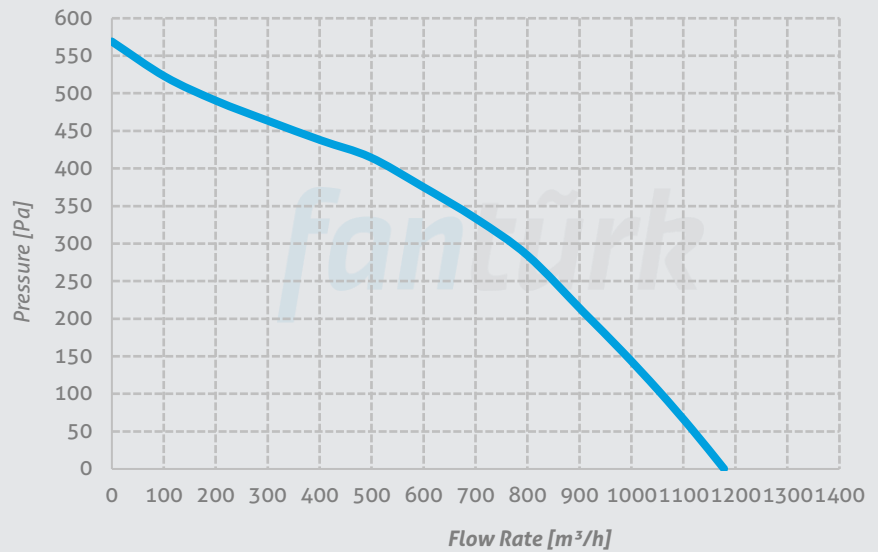
D-KTF 30 - 15

Voltage 230 V
Frequency 50 Hz
Motor Power 76 W
Current 0,29 A
Capacitor 2,5 μ f
Motor Speed 2350 rpm
Flow Rate 540 m³/h
Sound Pressure Level 52 dBA
Weight 7 kg



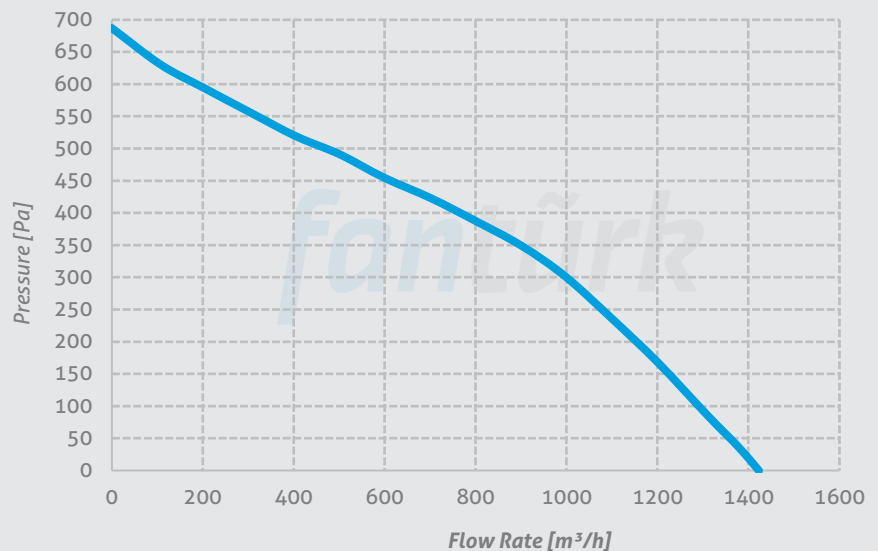
D-KTF 40 - 20

Voltage 230 V
Frequency 50 Hz
Motor Power 160 W
Current 0,68 A
Capacitor 4 μ f
Motor Speed 2600 rpm
Flow Rate 1150 m³/h
Sound Pressure Level 63 dBA
Weight 12 kg



D-KTF 50 - 25

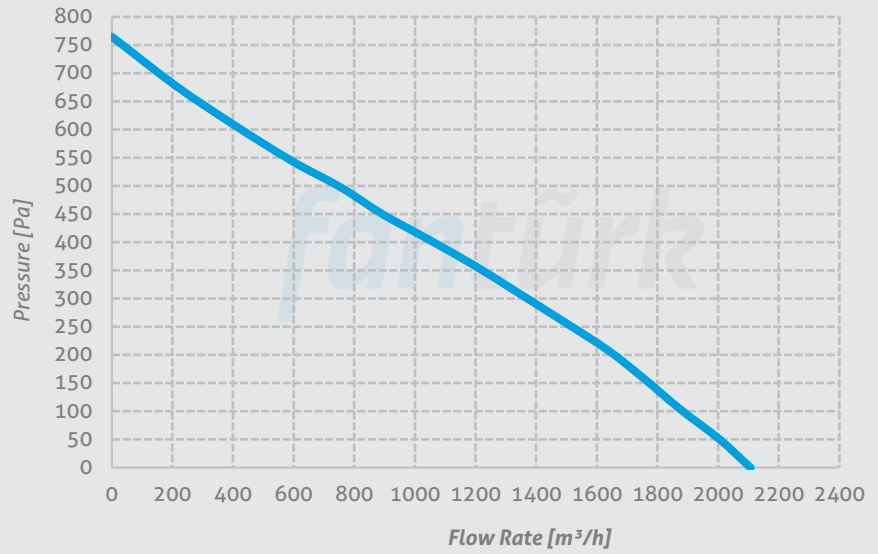
Voltage 230 V
Frequency 50 Hz
Motor Power 180 W
Current 0,8 A
Capacitor 4 μ f
Motor Speed 2700 rpm
Flow Rate 1520 m³/h
Sound Pressure Level 58 dBA
Weight 16 kg



Performance Curves

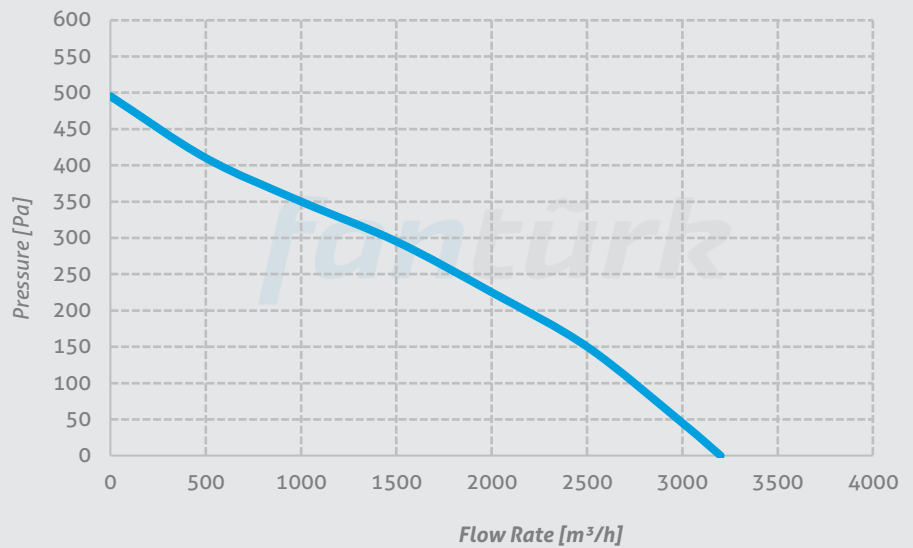
D-KTF 60 - 30

Voltage 230 V
Frequency 50 Hz
Motor Power 285 W
Current 1,5 A
Capacitor 5 μ f
Motor Speed 2500 rpm
Flow Rate 2110 m³/h
Sound Pressure Level 70 dBA
Weight 20 kg



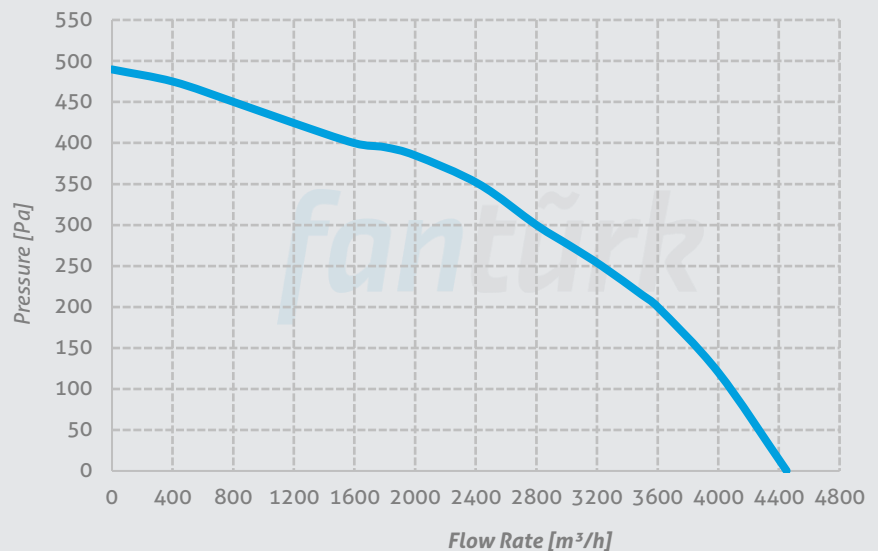
D-KTF 60 - 35

Voltage 230 V
Frequency 50 Hz
Motor Power 272 W
Current 1,23 A
Capacitor 8 μ f
Motor Speed 1364 rpm
Flow Rate 3150 m³/h
Sound Pressure Level 66 dBA
Weight 27 kg



D-KTF 70 - 40

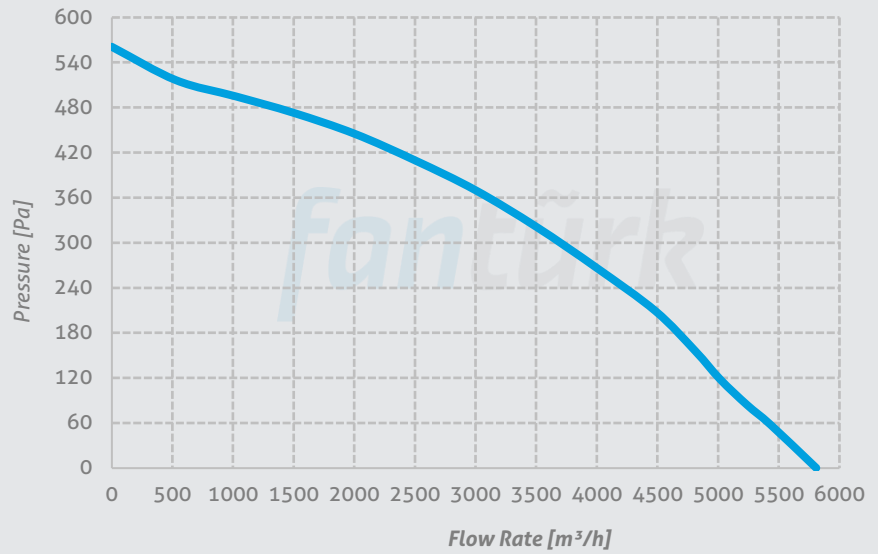
Voltage 230 V
Frequency 50 Hz
Motor Power 500 W
Current 1,8 A
Capacitor 12 μ f
Motor Speed 1380 rpm
Flow Rate 4400 m³/h
Sound Pressure Level 63 dBA
Weight 38 kg



Performance Curves

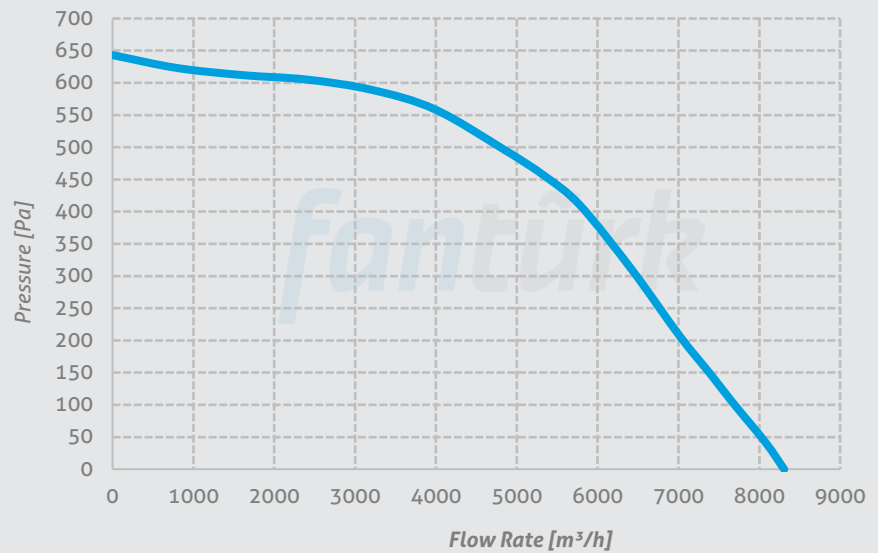
D-KTF 80 - 50

Voltage 230 V
Frequency 50 Hz
Motor Power 800 W
Current 3,7 A
Capacitor 16 μ f
Motor Speed 1359 rpm
Flow Rate 6000 m^3/h
Sound Pressure Level 70 dBA
Weight 61 kg



D-KTF 100 - 50

Voltage 230/380 V
Frequency 50 Hz
Motor Power 1550W
Current 6,8 A
Capacitor 31 μ f
Motor Speed 1380rpm
Flow Rate 8200 m^3/h
Sound Pressure Level 73 dBA
Weight 86 kg



Headquarter: Beşevler Mah. Yıldırım Cad. No336 Nilüfer/Bursa Türkiye

Factory: Pamucak OSB Mah. 2. Cadde No: 14 Pazaryeri/Bilecik Türkiye

T: 90(224)482 2969 E: info@fanturk.com.tr

fanturk.com.tr