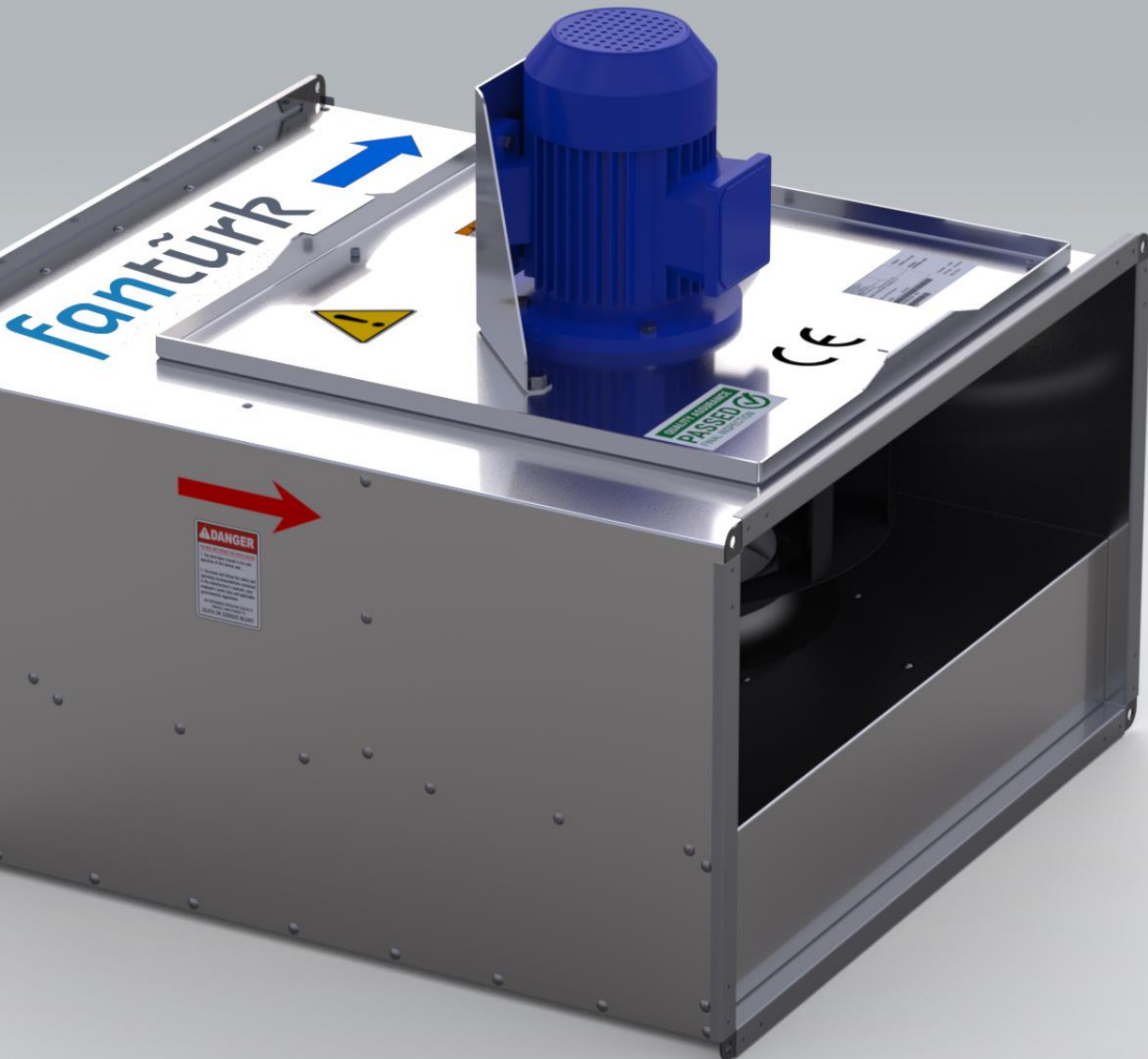




Product Catalogue



D-KTF External Driven Rectangular Duct Type In-Line Fan



Technical Specifications

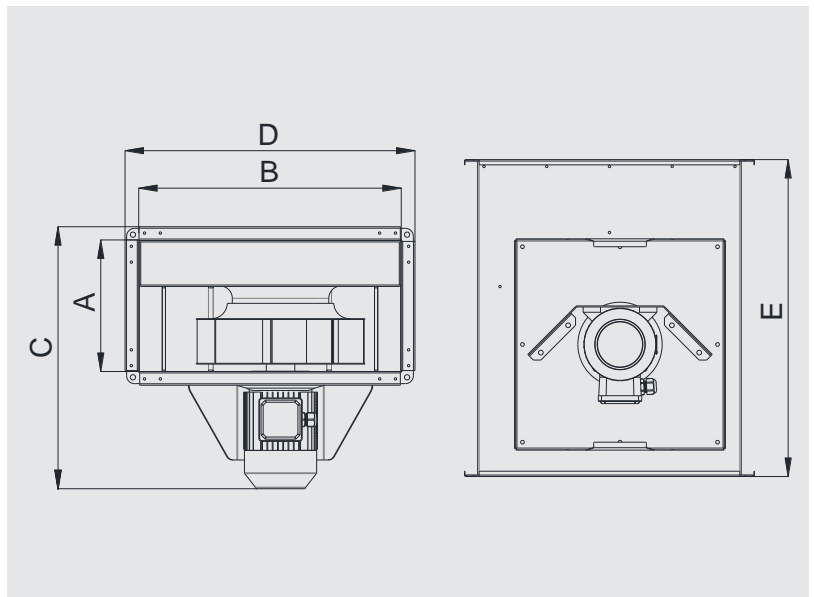
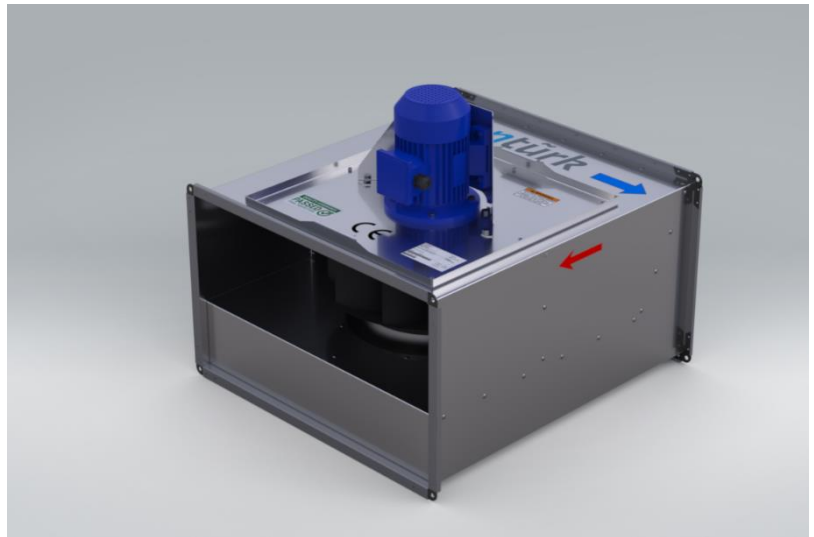
RECTANGULAR DUCT TYPE IN-LINE FAN

D-KTF series rectangular duct type radial fans; They are the ideal fans for ducted ventilation systems where high air flow and high pressure are required. Thanks to their compact construction, they can be installed directly in the air ducts without the need for large bends and transducers in any position required. D-KTF series in-line fans are the ideal choice for high performance and trouble-free operation.

Made of high quality corrosion resistant galvanized steel. Fans are radial fans with backward curved blades. Due to the fact that the motor is out of the air flow, it is protected from the factors that will damage the motor or hot air. This method provides 120 ° C continuous operation. Thanks to the service cover, the fan can carry out maintenance without removing the duct connection. Motors are single phase and has IP55 and Class F insulation. Speed controller is optional for all models.

Usage Areas

Can be used for ventilation systems in industrial buildings, kitchens, toilets, swimming pools, gyms, warehouses, hospitals, offices, laboratories, shopping malls, restaurants, theaters, residential buildings.

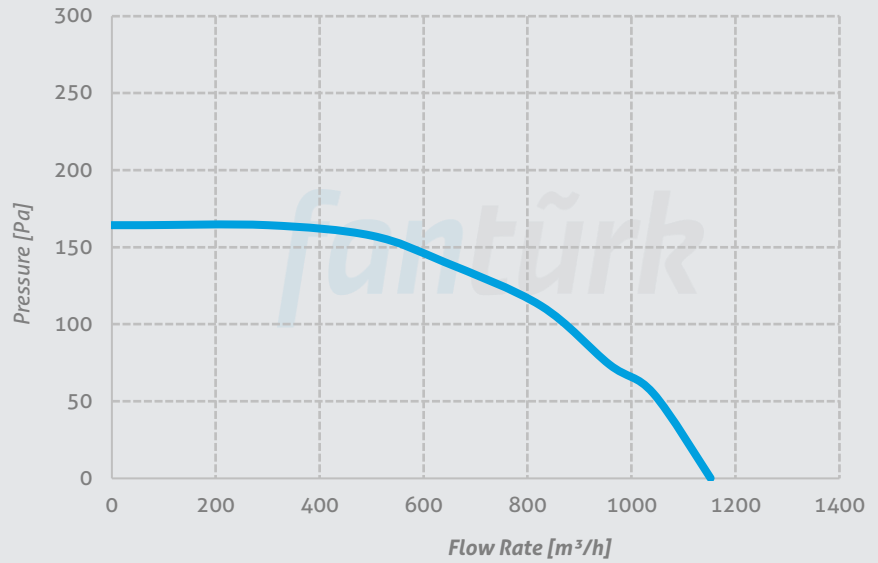


MODEL	A	B	C	D	E	VOLTAGE	FREQUENCY	POWER	CURRENT	MOTOR SPEED	AIR FLOW RATE	SOUND LEVEL	WEIGHT
	mm	mm	mm	mm	mm	V	Hz	kW	A	rpm	m ³ /h	dBA	kg
D-KTF 280	250	500	469	550	650	380	50	0,18	0,6	1340	1150	48	28
D-KTF 315	250	500	495	550	600	380	50	0,25	0,8	1380	2000	53	32
D-KTF 355	300	600	545	650	750	380	50	0,37	1,2	1390	2500	55	34
D-KTF 400	400	700	665	750	800	380	50	0,55	1,6	1385	3500	56	38
D-KTF 450	400	700	745	750	800	380	50	0,75	2	1370	5000	58	49
D-KTF 500	500	800	785	850	900	380	50	1,1	2,6	1380	7000	61	63
D-KTF 560	500	1000	810	1050	1050	380	50	1,5	3,5	1385	9800	64	74

Performance Curves

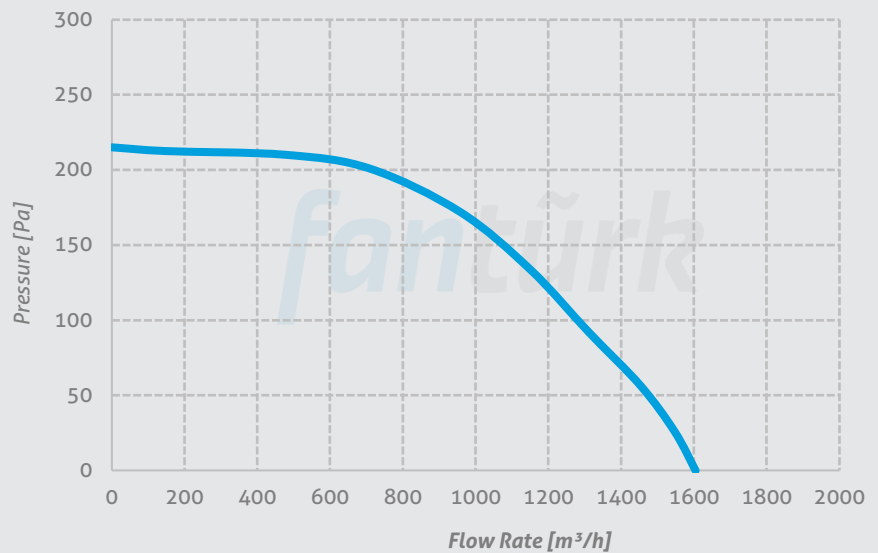
D-KTF 280

Voltage 380 V
Frequency 50 Hz
Motor Power 0,18 kW
Motor Speed 1340 rpm
Sound Pressure Level 48 dBA
Weight 28 kg



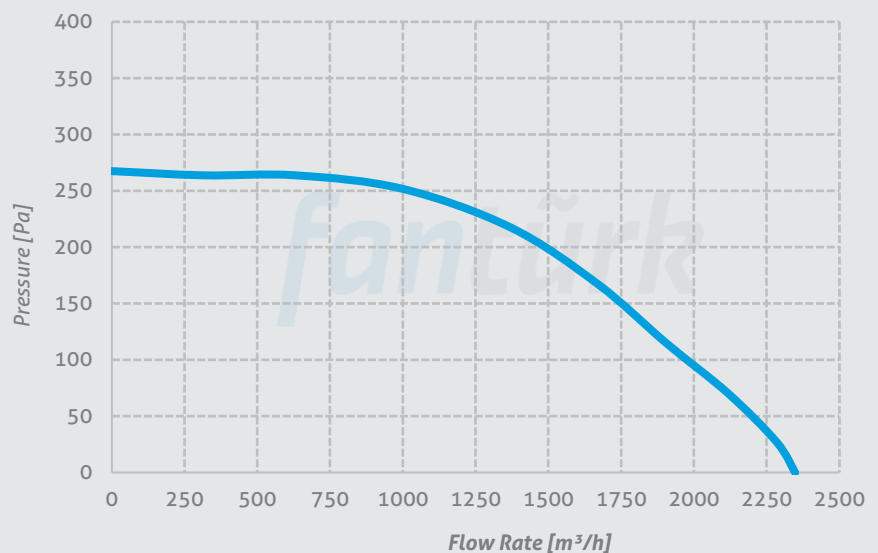
D-KTF 315

Voltage 380 V
Frequency 50 Hz
Motor Power 0,25 kW
Motor Speed 1380 rpm
Sound Pressure Level 53 dBA
Weight 32 kg



D-KTF 355

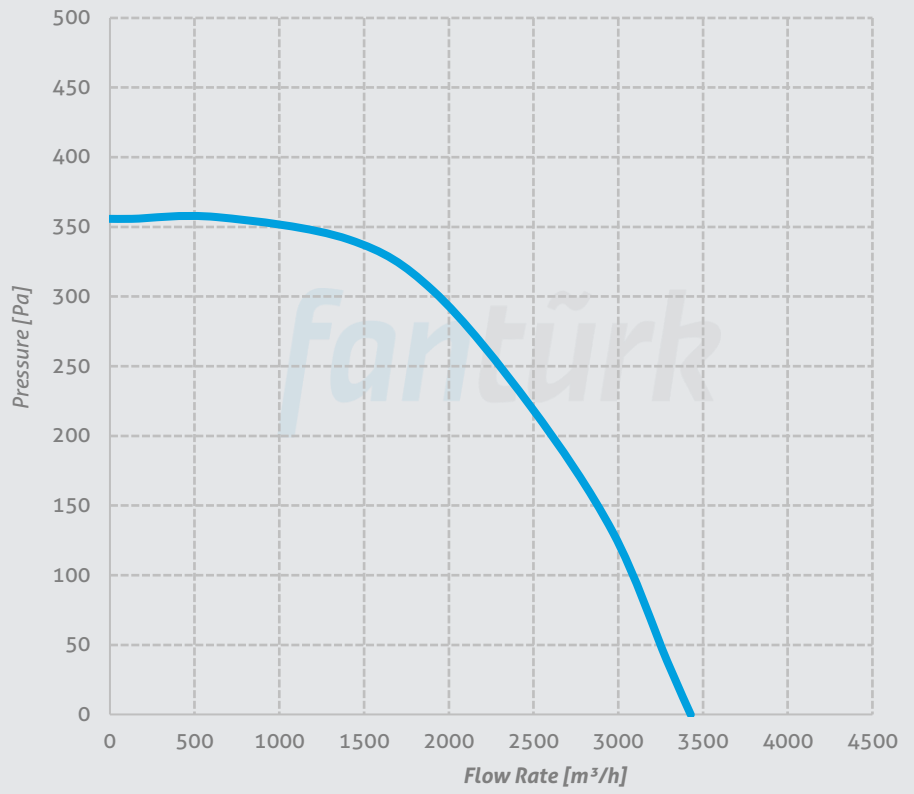
Voltage 380 V
Frequency 50 Hz
Motor Power 0,37 kW
Motor Speed 1390 rpm
Sound Pressure Level 55 dBA
Weight 34 kg



Performance Curves

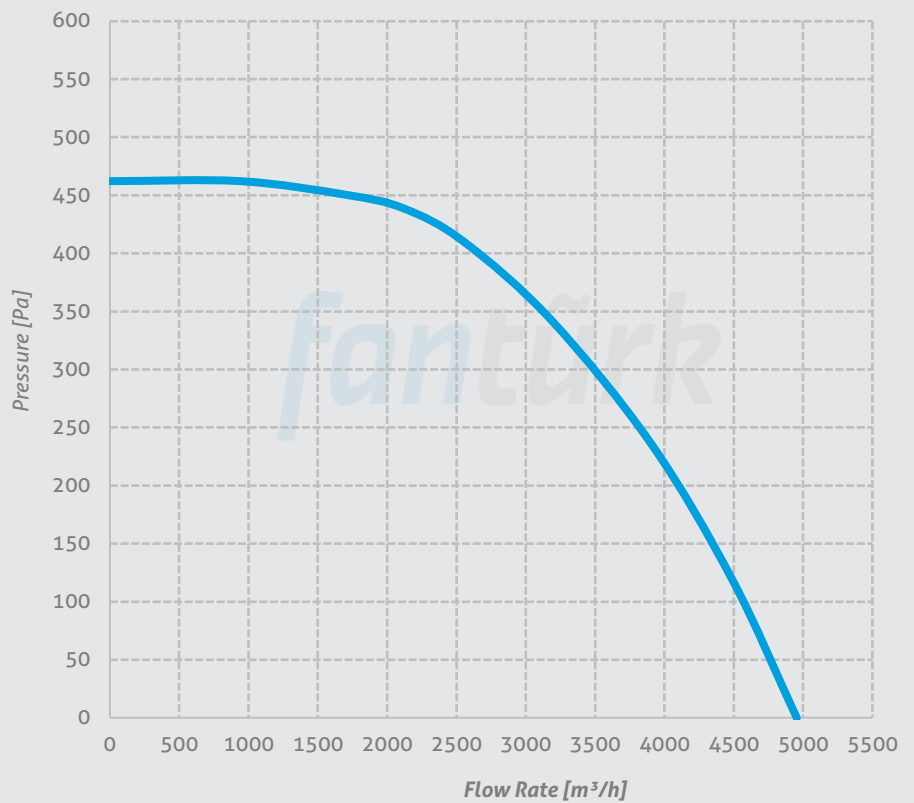
D-KTF 400

Voltage 380 V
Frequency 50 Hz
Motor Power 0,55 kW
Motor Speed 1385 rpm
Sound Pressure Level 56 dBA
Weight 38 kg



D-KTF 450

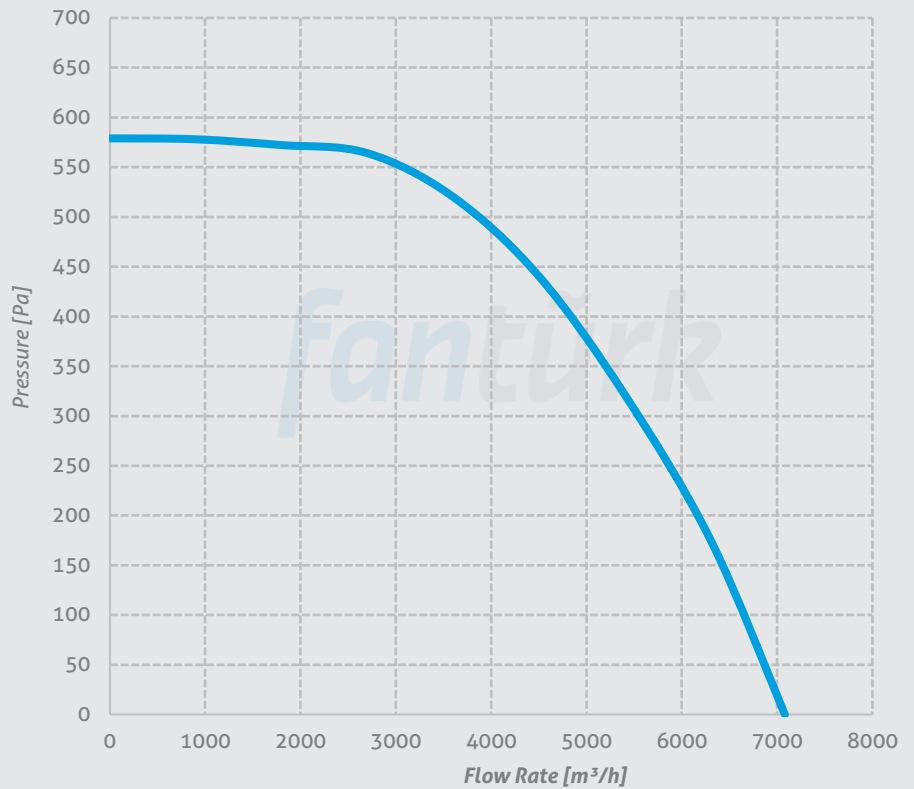
Voltage 380 V
Frequency 50 Hz
Motor Power 0,75 kW
Motor Speed 1370 rpm
Sound Pressure Level 58 dBA
Weight 49 kg



Performance Curves

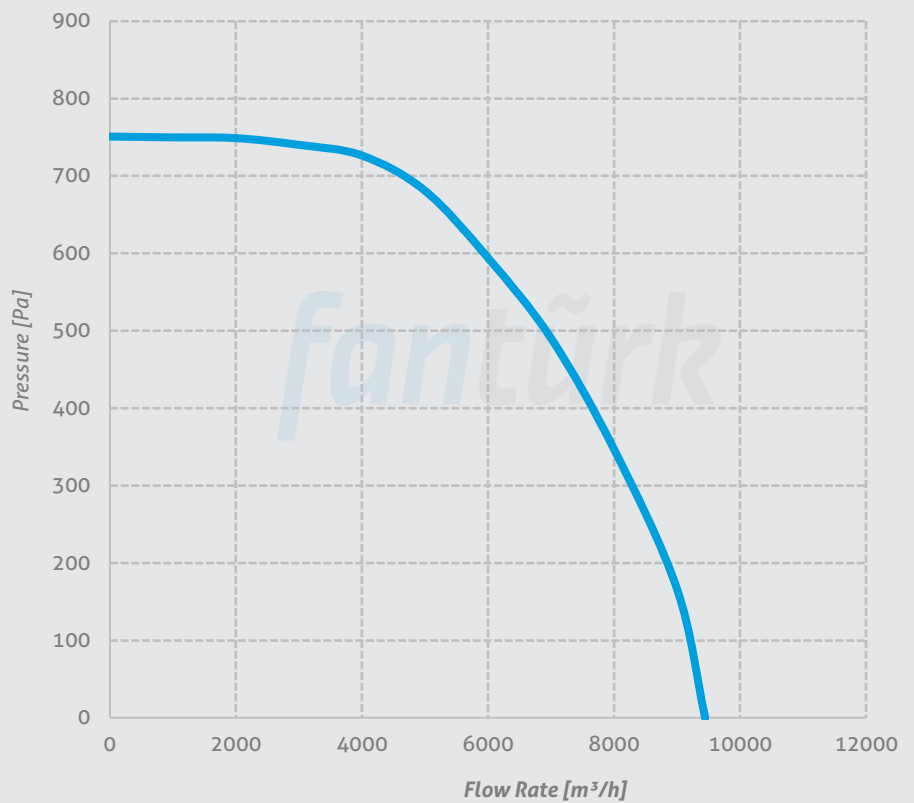
D-KTF 500

Voltage 380 V
Frequency 50 Hz
Motor Power 1,1 kW
Motor Speed 1380 rpm
Sound Pressure Level 61 dBA
Weight 63 kg



D-KTF 560

Voltage 380 V
Frequency 50 Hz
Motor Power 1,5 kW
Motor Speed 1385 rpm
Sound Pressure Level 64 dBA
Weight 74 kg



Headquarter: Beşevler Mah. Yıldırım Cad. No336 Nilüfer/Bursa Türkiye

Factory: Pamucak OSB Mah. 2. Cadde No: 14 Pazaryeri/Bilecik Türkiye

T: 90(224)482 2969 E: info@fanturk.com.tr

fanturk.com.tr